

## Description

The SRC-30 is a reliable, cost-effective, and proven product that seeks to provide the consumer with maximum efficiency in terms of modularity.

A slip ring particularly suited for being equipped with fluidic Rotary Unions. This product is suitable for signal or power passage up to a max of 60A. Terminal blocks both on stator and rotor side allow an easy and quick connection/disconnection.

Model Family	Industry	Application
SRC-30	Packaging	Packaging, Automation, Rotary Table

### Electrical Features

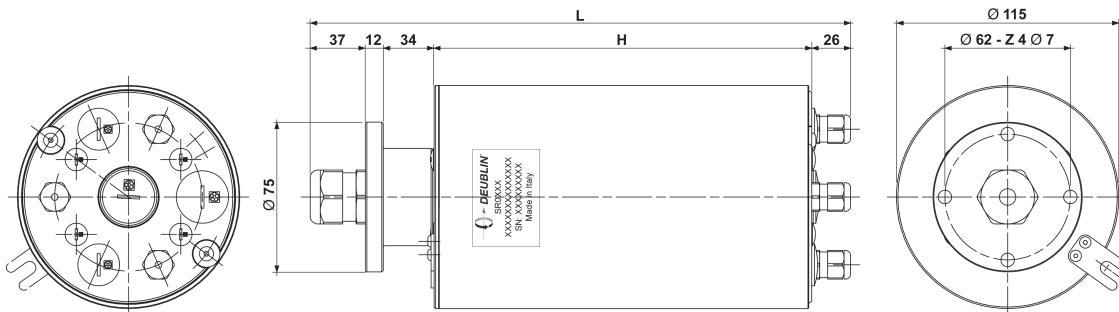
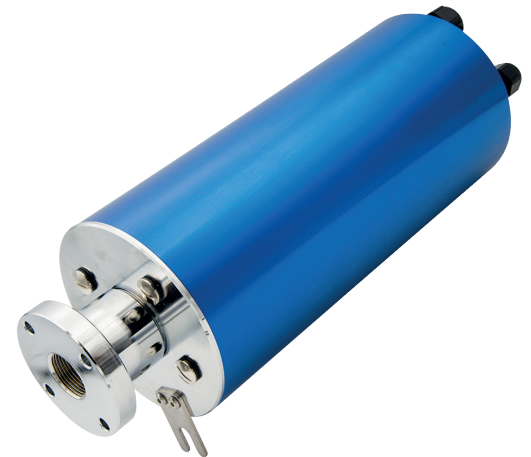
Max. Composition	99 rings
Voltage, max	880 VAC/DC for power – 190 VDC for signal
Current, max steady state	60 A power, 5 A signal
Data Communication Speed	Up to 100 Mbps for signal
Conductor Ring	Gold Plated Copper Alloy
Brush Contact	Alloy monofilament or polifilament/Carbon
	Brushes
Wiring	4 mm <sup>2</sup> power/0,34 mm <sup>2</sup> signal
Connection, stator	Connector/Flying leads
Connection, rotor	Connector/Flying leads

### Mechanical Features

Speed, max.	250 to 1.500 RPM
Direction of Rotation	Bi-Directional
IP Rating	Standard IP55 - Max. IP68
Mounting Orientation	Vertical or Horizontal
Temperature, operating	-20 °C to +80 °C
Temperature, storage	-40 °C to +90 °C
Material, housing	Anodized Aluminum
Material, rotor	Anodized Aluminum
Material, cover	Anodized Aluminum

### Versions

SRC-30 (standard)	Cordgrip connection both on rotor and stator side, 3 m flying leads
Options	Thru Bore Passage, Cord Grips, Mounting Flanges, flying lead length, customized anti-rotation, internal heater for low temperature applications



SIZE	L	H
SRC-30 S	262	153
SRC-30 M	362	253
SRC-30 L	462	353